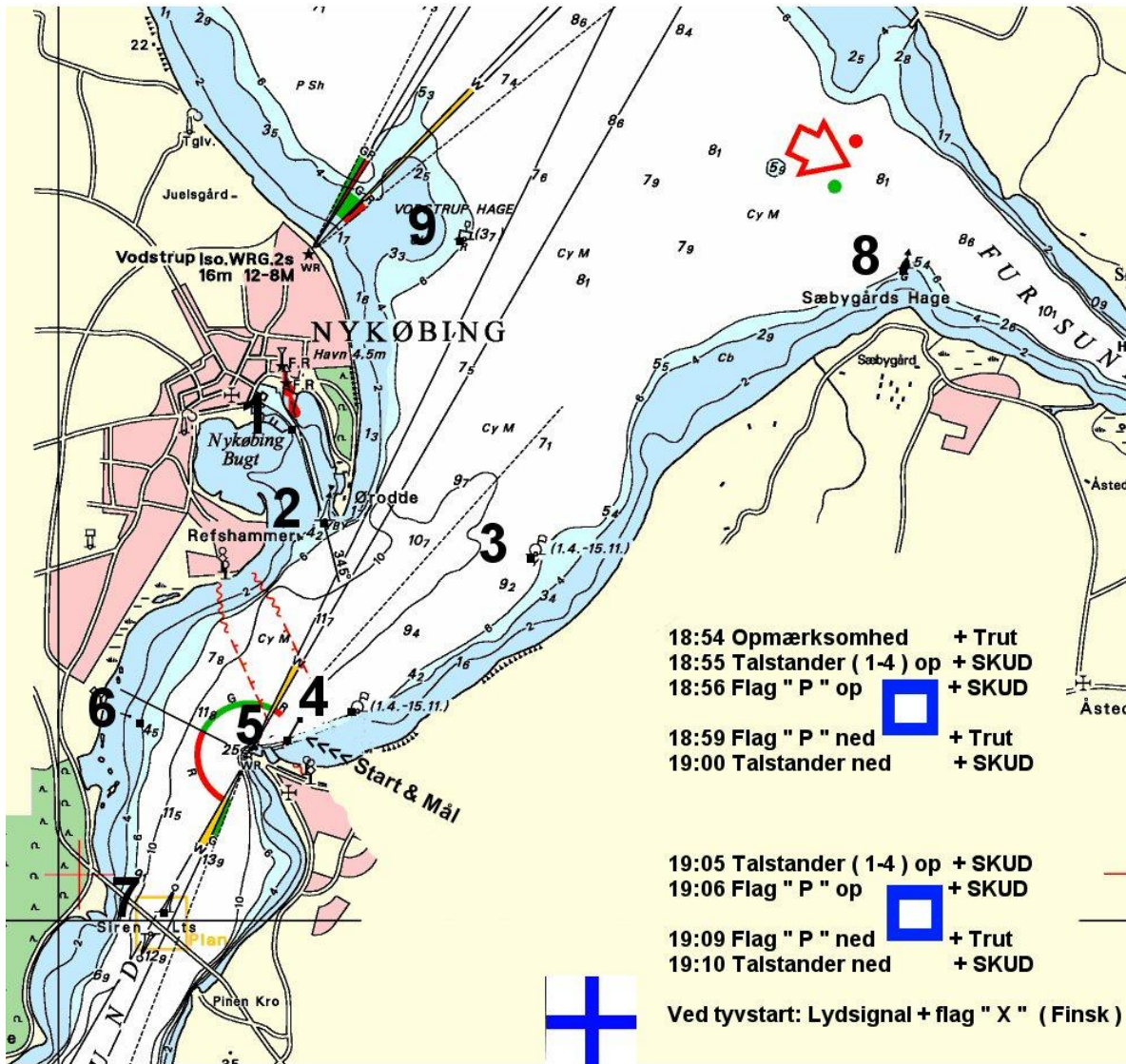


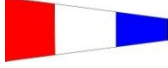



# ONSDAGSSEJLADSER



## Baner – Efterårssæson med start fra Nykøbing Mors.

- |                              |   |                                     |
|------------------------------|---|-------------------------------------|
| Talstander 1 (Vind i Ø/V):   |  | start-2b-3b-2b-4s-6b-4b-mål, 7,0 sm |
| Talstander 2 (Vind i SV/NØ): |  | start-2b-3s-5b-3b-5s-mål, 7,9 sm    |
| Talstander 3 (Vind i NV/SØ): |  | start-4b-2b-4s-6b-4b-2b-mål, 7,2 sm |
| Talstander 4 (Vind i N/S):   |  | start -5s-6b-7b-6s-5b-mål, 7,0 sm   |